

Fly-In Biel-Kappelen LSZP

12 Mai 2024



Crew Guide

Contents

1. Welcome
2. General information
3. Timetable
4. Airfield Biel-Kappelen LSZP
5. Alternate airports
6. Technical support
7. Emergency
8. Local regulations
9. Situation plan
10. Important telephone, email and Homepage

1. Welcome

Dear Crews

The first Fly-In for former and actual Swiss Air Force aircrafts welcomes you in Biel-Kappelen LSZP. It is a great honour for us to host you as our guest for this event in our beautiful "3 Lake Region".

All aircraft that were or are still in service with the Swiss Air Force and have the original color scheme are invited. Parking space limited – early registration desired > misteli.p@bluewin.ch

We try to keep the paperwork as simple as possible, therefore you can find the most important firsthand information for the participation in this guide. If you have any questions, please do not hesitate to send a mail to the responsible organisator Paul Misteli +41 79 136 28 39 misteli.p@bluewin.ch

Dear participants, I am glad to have you with us on a remarkable flying event and I thank you very much for your efforts to a safe flight operation.

Paul Misteli, Head of Aerodrome Biel-Kappelen LSZP

2. General Informations

Customs on request

If you need customs, please fill the form minimum 2 hour before arrival at LSZP or 1 Hour before departure in LSZP:

<https://customsmanager.ch/lstp>

Flightplan

Do not forget to close your flightplan: In the air by Zürich Information 124.700 or Geneva Information 126.350, or by phone +41 43 931 61 61 after landing.

Arrival

Sunday from 08.00 LT, airfield closed from 11.00-11.20, 1230–1330, 14.30–14.50 local time

No landing fees for the participating aircrafts

Your aircraft parking position will be given by our ground crew (yellow jackets)

Arrival on saturday possible, please contact Paul Misteli 079 136 28 39. We can organise hotel rooms for you.

On Arrival

Go to the PILOT'S welcome desk next to the restaurant - where you will receive actual information, participant passes, food vouchers and a little gift.

Food and Beverage - Restroom

We have a nice little Restaurant on site. Restrooms are available on site.

C-Office

Our C-Office is situated in a container near the children playground. Computer with internet is available for your flight planning.

Departure

On your flight back home you can open your flight plan after take off with a call to Zürich information 124.700 or when you fly westbound with Geneva Information 126.350.

3. Timetable – provisional program (all times are local time)

Sunday

From 08.00	Arrivals and welcome to the new participants
11.00 – 11.20	SUPER-PUMA air display (airfield closed during the display > D-Area active!)
12.00 – 13.30	Lunch > Buurehamme, Härdöpfusalat and a non-alcoholic drink (offered to all crew members)
12.30 – 13.30	Modell airplane display (airfield closed during the display)
14.30 – 14.50	SUPER-PUMA air display (airfield closed during the display > D-Area active!)
18.00	Departure to the different homebases

4. Airfield Biel-Kappelen LSZP

Be careful our airfield is located below the TMA of Bern Airport LSZB (Airspace D above 3'500 ft AMSL), stay below or call 127.325 to enter. In the near eastbound the CTR of Grenchen LSZG, to enter call 120.105. Westbound the CTR of the military airbase of Payerne, to enter call 128.675.

Quick reference

AD LSZP Biel-Kappelen
ELEV 1437ft AMSL

RWY 04/22 690 x 25m Grass reinforced with plastic grids

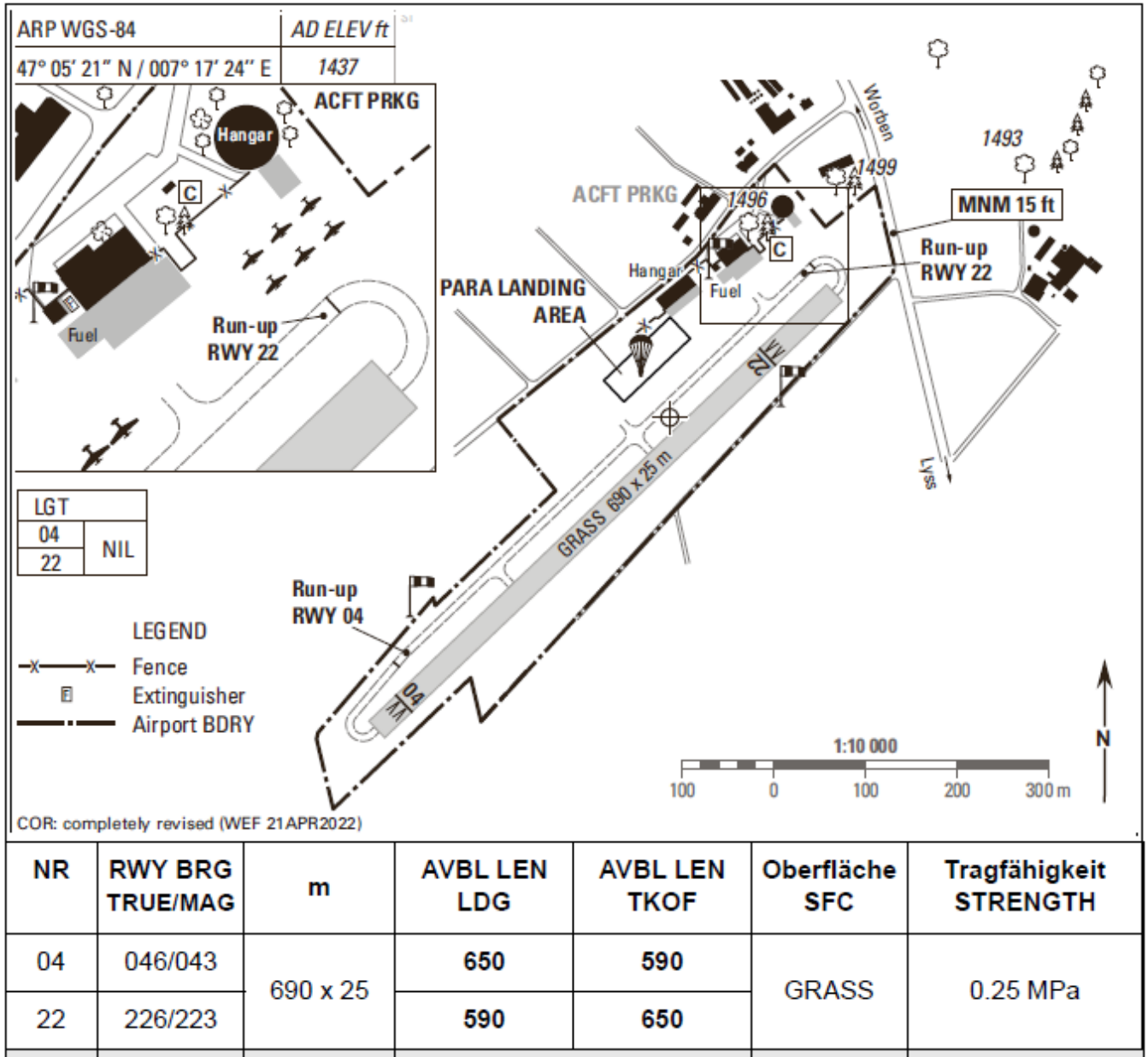
RWY 04 – AVBL LEN LDG 650m – AVBL LEN TKOF 590m - Grass
RWY 22 – AVBL LEN LDG 590m – AVBL LEN TKOF 650m – Grass

Radio Kappelen Airfield 123.155 – only blindcalls – no tower

OPR hours:

MON – SAT SR – HRH, no take off 12.00 – 13.00 LOC TIME

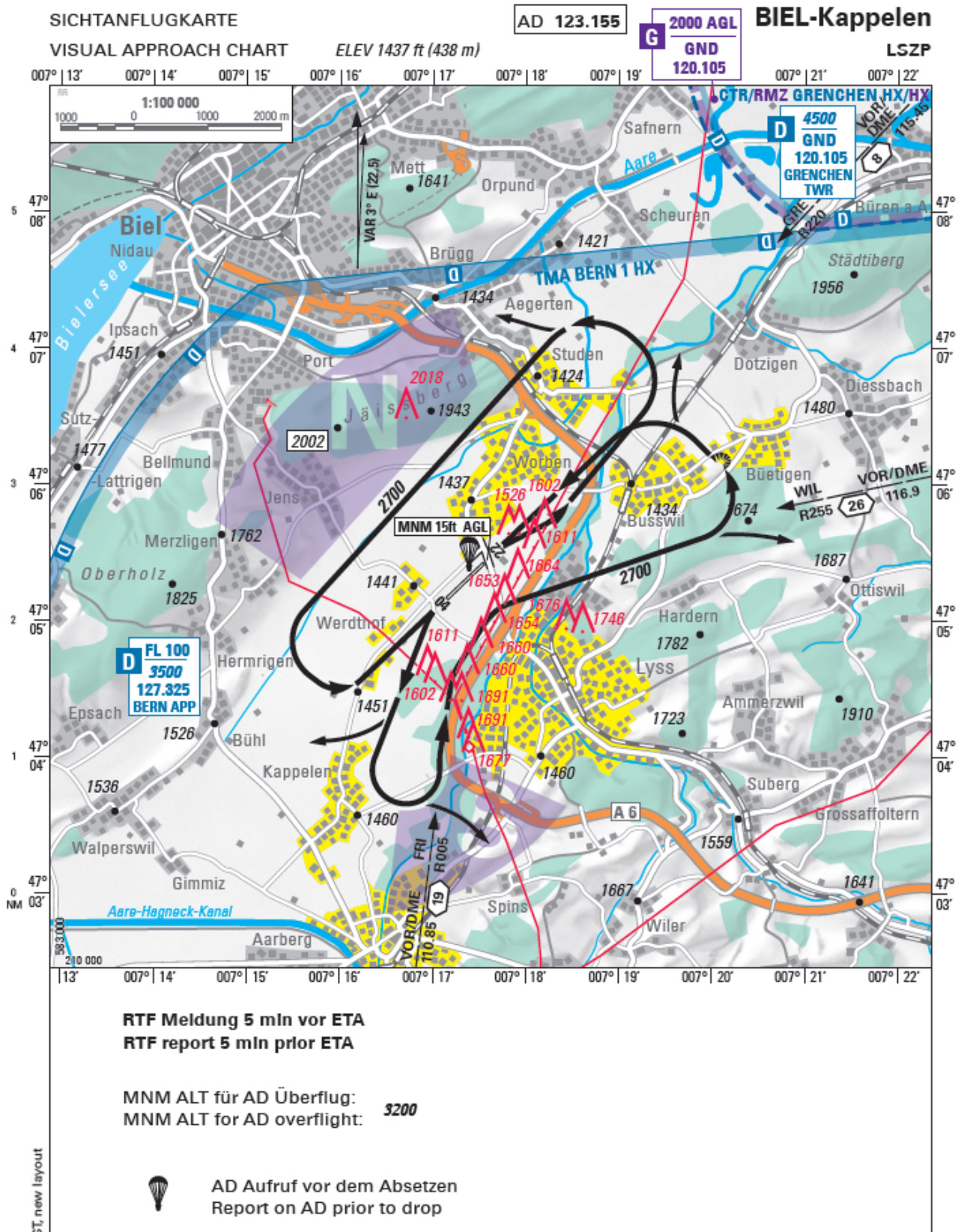
SUN 0800 – HRH, no take off 12.00 – 13.30 LOC TIME



>Only for information, not for operational use.

FOR DEPARTURE 04, YOU HAVE TO FLY STRAIGHT AHEAD FOR ABOUT 20 SECONDS AFTER TAKE-OFF. AVOID FLYING OVER THE FARM ON THE RIGHT SIDE!!





>Only for information, not for operational use.

Noise sensitive areas

Do not overfly the villages near our airfield. We are in a noise sensitive area, please fly the circuits as exact as possible. Circuits are flown at 2'700ft AMSL

5. Alternate Airport

Grenchen LSZG
AD LSZG Grenchen
ELEV 1411ft AMSL

RWY 06/24 1000 x 23m

RWY 06 – AVBL LEN LDG 865m – AVBL LEN TKOF 955m - ASPH
RWY 24 – AVBL LEN LDG 1000m – AVBL LEN TKOF 865m – ASPH
RWY 06 R – AVBL LEN LDG 618m – AVBL LEN TKOF 640m - Grass
RWY 24 L – AVBL LEN LDG 640m – AVBL LEN TKOF 618m – Grass

ATIS Grenchen 121.105
Tower Grenchen 120.105

6. Technical Support (LSZP)

Piston engine fuel AVGAS 100LL – payable only with credit cards – no cash
Piston engine fuel UL91 - payable only with credit cards – no cash
Jet fuel JET A1 – payable only with credit cards – no cash
Engine oil on request
Power supply 12V and 24V available
No hangar space available

7. Emergency

For prepared emergencies requiring a longer runway, Grenchen (LSZG) will be within 8 NM distance.

Fire fighting

We only have handheld fire extinguisher located at the fuel station, in each hangar handheld an 50 kg fire extinguisher.
For fire brigade call 118.

Ambulance / first aid

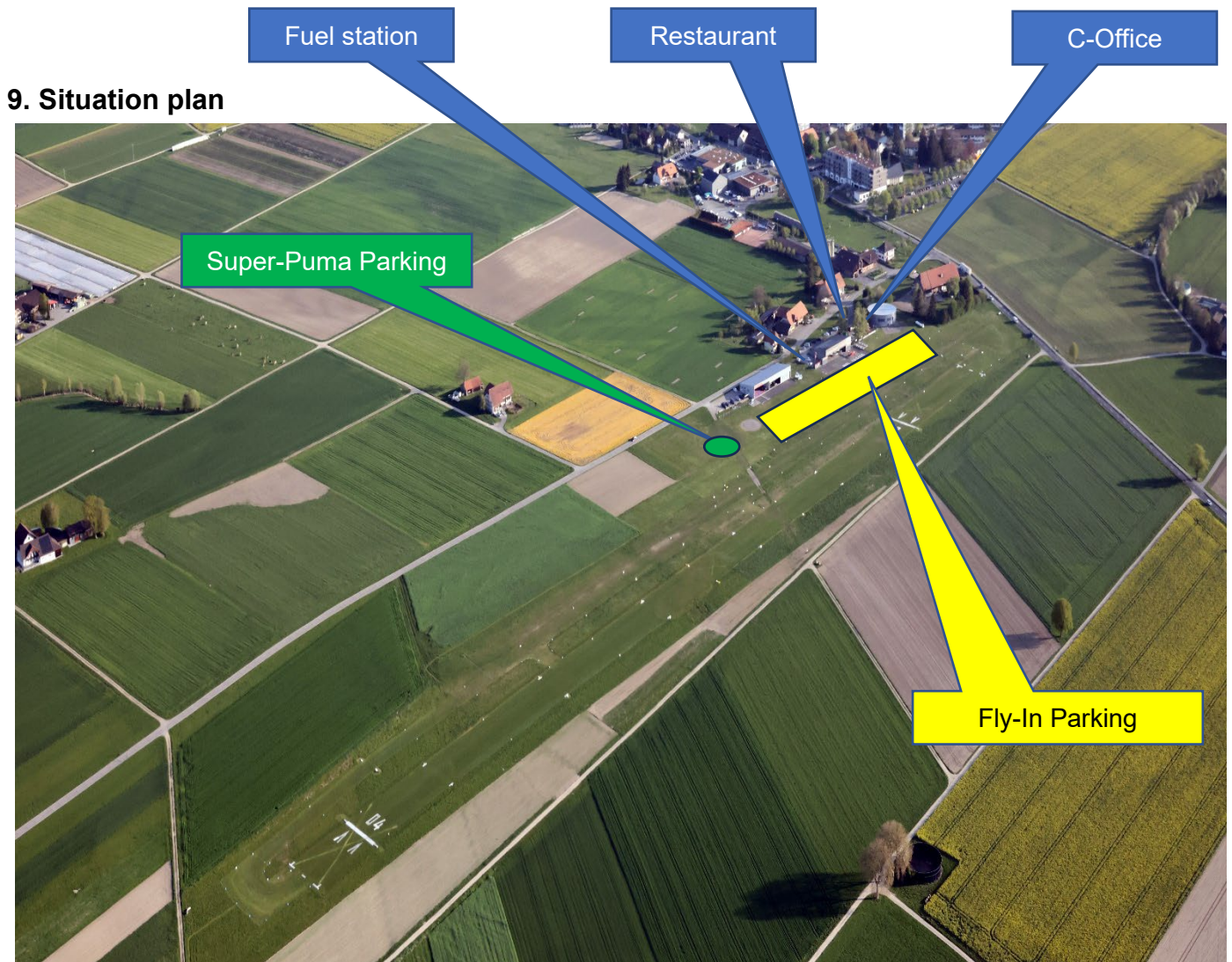
Rescue teams with medical and first aid facilities are available under the number 144 or 032 324 24 24. Rescue helicopters of the Swiss Air Ambulance REGA are available on telephone number 1414. Emergency hospitals are located in the city of Biel and Aarberg.

8. Local regulations

General

During flight OPS, SAFETY is paramount. Overflying of built up areas and villages in the vicinity of the airfield (yellow areas) have to be avoided whenever possible. Please reduce power as soon as practical after reaching safe altitude.

Low passes are not allowed !



10. Important telephone, email and homepage

Head of Aerodrome Paul Misteli +41 79 136 28 39 misteli.p@bluewin.ch
 Homepage airfield Biel-Kappelen LSZP www.lszp.ch
 Skyguide OPS Zürich (close your flightplan by phone) +41 43 931 61 61 www.skyguide.com

11. Disclaimer

The Flugplatzgenossenschaft Biel und Umgebung declines any liability for damage that occurs within the SIL perimeter (Aviation Infrastructure Sectoral Plan). In particular, in the entire outdoor area, at the gas station or in hangars, parked or suspended vehicles, aircraft and aircraft of any kind (including aircraft in rented hangar and outdoor spaces, parachute equipment and material lockers, etc.), regardless of who caused the damage.

The use of the Biel-Kappelen airfield by LSZP based and also by external airfield users is in all cases and without exception at the responsibility and risk of the responsible aircraft pilots or parachutists or their instructors. The airfield area (within the SIL perimeter and with the exception of the area outside the "air side") may only be entered by crews and accompanied passengers. In case of non-compliance, the Flugplatzgenossenschaft Biel und Umgebung declines any responsibility. Parents are responsible for their children.

Attending events that take place within the SIL perimeter is always and without exception the responsibility and risk of the visitors, regardless of whether they are private or public events.

Flugplatzgenossenschaft Biel und Umgebung April 2024